



सत्यमेव जयते

भारत सरकार
GOVERNMENT OF INDIA
भाभा परमाणु अनुसंधान केन्द्र
BHABHA ATOMIC RESEARCH CENTRE
Centre for Design and Manufacture

ट्रॉम्बे,
मुंबई-४०० ०८५.
TROMBAY,
MUMBAI -400 085

दूरभाष :
TELEPHONE : 25590026

फेक्स संख्या :
FAX NUMBER +91-22-2550 5151

Email: nksabai@barc.gov.in

Ref: BARC/CDM/Maint/MF/NK/2017/

October 26, 2017

Call for Quotation

**Sub: Design, Fabrication, Packing, Supply, Installation and Commissioning of
Capsule Lift – “Hydraulic Elevator” at CDM.**

With reference to the above cited subject, it is requested you to submit the competitive quotation for Design, Fabrication, Packing, Supply, Installation and Commissioning of **Capsule Lift – “Hydraulic Elevator”** at Centre for Design and Manufacture, Bhabha Atomic Research Centre, Trombay, Mumbai – 400085. Details of Technical Specification and scope of work are as follows.

Technical Specifications.

Description	Specifications
Model	Ground + 2 (With SS cabin & Manual Telescopic Door)
No. of Landing	3
Capacity	300 Kgs.
No. of Passengers	4
Car / Platform Size	1300 mm x 1000 mm
Space required	1500 mm x 1500 mm
Car Base	M.S. fabricated Platform
Lifting Height	8100 mm
Overall Height	11000 mm
Flooring	Vinyl Flooring
Over Head Clearance	9 feet / 2700 mm from landing
Ascending Speed	300 mm / s
Descending Speed	300 mm / s
Power Supply	440 Volts (3 Phase)
Motor Capacity	5 HP
Control Power Supply	24 Volts DC
Car Operating Panel	Soft touch push button mounted on SS panel
Landing Level Indicator	Single Arrow and Number Indication Push Button
Basic Ground	Load Bearing Foundation with 200 mm thick RCC top shall be provided as per the drawing. (Scope of CDM in co-ordination with CED)
Space for Motor & Control Panel	600 mm x 900 mm x 1200 mm height space shall be provided from adjacent area i-e Mech. Maintenance section, for placing hydraulic power pack and control panel.
Landing level doors	Telescopic door.
GA Drawing	GA 3580-1 for GR. Plan & GA 3580-2 for Elevation – Figure 3: Three Dimensional View (Attached)

Scope of Supply

1. Basic Equipment for G + 2.
2. Variable Speed Valve.
3. S.S Cabin and Manual Telescopic Door.
4. Landing Door with Door Lock – 3 Nos.
5. Battery Backup for lowering the lift on power failure.
6. Call push Buttons (COP and LOP).
7. Electrical control Module.
8. Installation and Commissioning. It is required to extend the free service period of 5 years after guarantee period.

Scope of CDM

All civil work such as

1. Load Bearing Foundation with 200 mm thick RCC top.
2. A cut out (240mm x 80 mm x 80 mm) on the wall for fixing the landing level indicator / push button.
3. Doors at landing level and other related work shall be carried out with the help of CED.
4. Material handling and welding related work at CDM related to erection and commissioning of the proposed Home Lift.
5. A 3 phase electric connection and suitable ELCB.

SAFETY FEATURES

Electrical System:

1. Overload relay for overload protection of motor.
2. Single Phase preventer for Motor Safety.
3. Cut off limit switches / signals for location positioning
4. Fuses and MCB's for electrical controls.
5. 24V D.C for control system / 12 V Signal system
6. A. C. Power supply within control panel and power pack only.

Hydraulic System:

1. Overload relief valve to divert the supply back to tank in case of overloading.
2. Hose break safety valve to stop any leakage caused due to hose-brake.
3. Special 'Zero-leakage' load holding valve to maintain the load at lifted level In case of power failure.

Mechanical:

1. Mechanical stopper to stop overshooting of maximum lifted level.
2. Mechanical emergency braking system to hold the car in position in case of any accidental failure of lifting gear.

General terms and Conditions:

1. Consolidated cost for Fabrication, Packing & Forwarding and Commissioning for the Hydraulic Elevator may be quoted. Spare parts required for the 5 years of smooth operation may be listed and quoted separately. Break up for taxes as applicable shall be indicated separately.
2. PAN / GST No. are to be clearly indicated in the offer. Otherwise it will be rejected.
3. The entire work shall carry a site warranty of one year from the date of acceptance.
4. Entire work shall be completed within 60 days from the date of acceptance of the work order.
5. Any delay on your part will attract a penalty of ½% per week and max. of 5%.
6. Any request for extension of completion date in writing will have to be got it approved by competent authority.
7. **No advance payment is admissible.** Payment will be made within 30 days only, after satisfactory completion of work and on production of warranty certificate, receipted delivery challan, bill and advance stamped receipt etc. as per the accounts procedure.
8. Payment will be released only through ECS.
9. Income tax @ 2% or as applicable will be deducted at source from your bill as per the prevailing guidelines on GST. Accounts Officer BARC will provide the TDS certificate.
10. Offer received after the due date shall be rejected.

Confidentiality Clauses:

I. Confidentiality:

You shall not disclose any information to any third party concerning the matters under this contract generally. In particular, any information identified as "Proprietary" in nature by the disclosing party shall be kept strictly confidential by the receiving party and shall not be disclosed to any third party without the prior written consent of the original disclosing party.

II. "Restricted information" categories under Section 18 of the Atomic Energy Act, 1962 and "Official Secrets" under Section 5 of the Official Secrets Act, 1923".

Any contravention of the above-mentioned provisions by any contractor, sub-contractor, consultant, adviser or the employees of a contractor will invite penal consequences under the aforesaid legislation.

III. Prohibition against use of BARC's name without permission for publicity purposes:

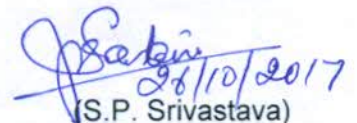
The contractor or sub-contractor, consultant, adviser or the employees engaged by the contractor shall not use BARCs name for any publicity purpose through any public media like Press, Radio, T.V. or Internet without the prior written approval of BARC.

Please submit your competitive offer for the above work as per the terms and conditions stipulated as above. The sealed envelope super scribing "**Quotation for Supply of Hydraulic Elevator**" may please be addressed to Head, Centre for Design and Manufacture, BARC, Trombay, Mumbai - 400 085, so as to reach on or before the **due date 30-11-2017 (4.30 pm)**.

The quotation must be sent only by Indian Speed Post.

Thanking you,

Yours faithfully,


(S.P. Srivastava)

Head, Centre for Design and Manufacture
For and on behalf of The President of India

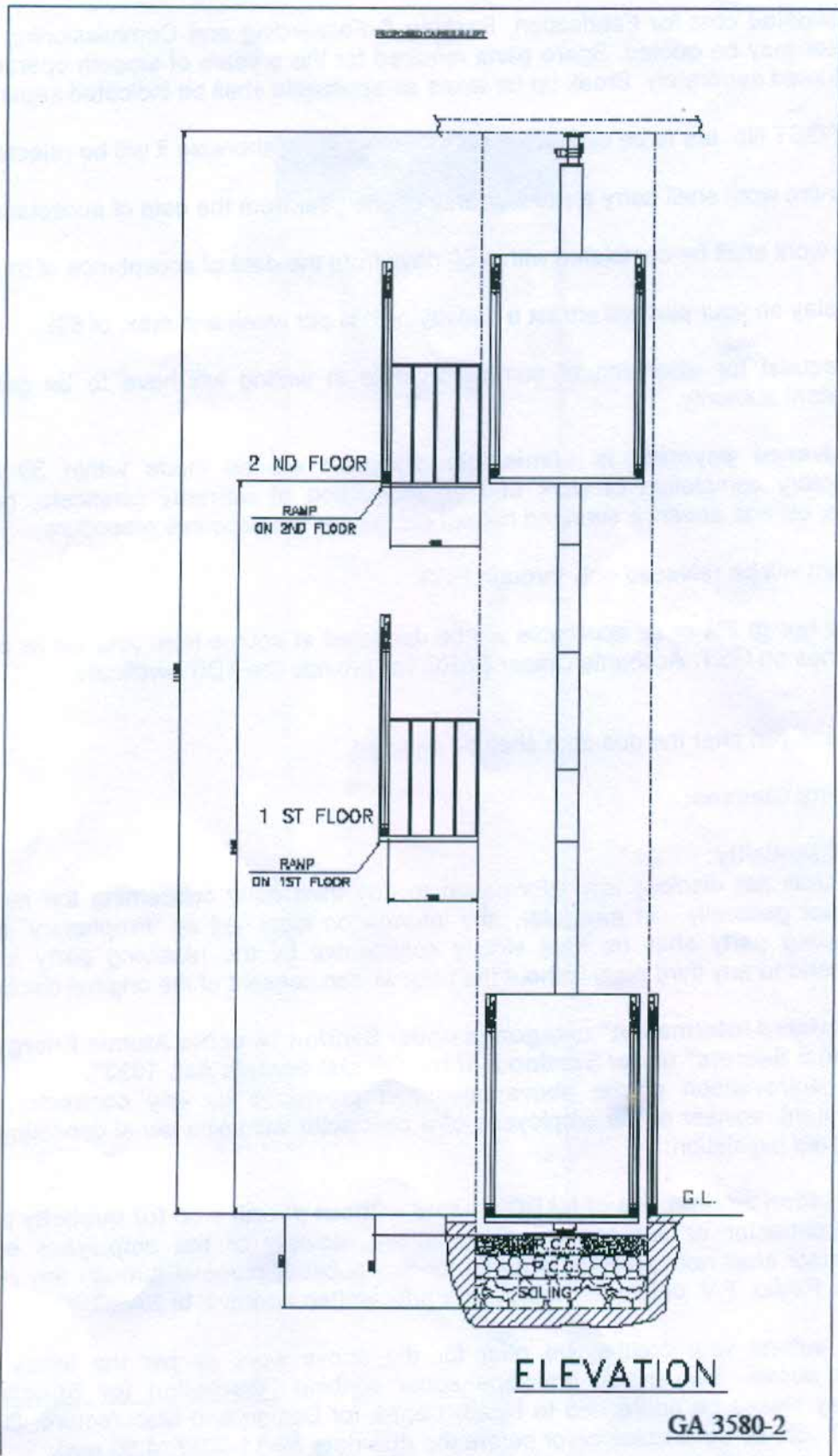
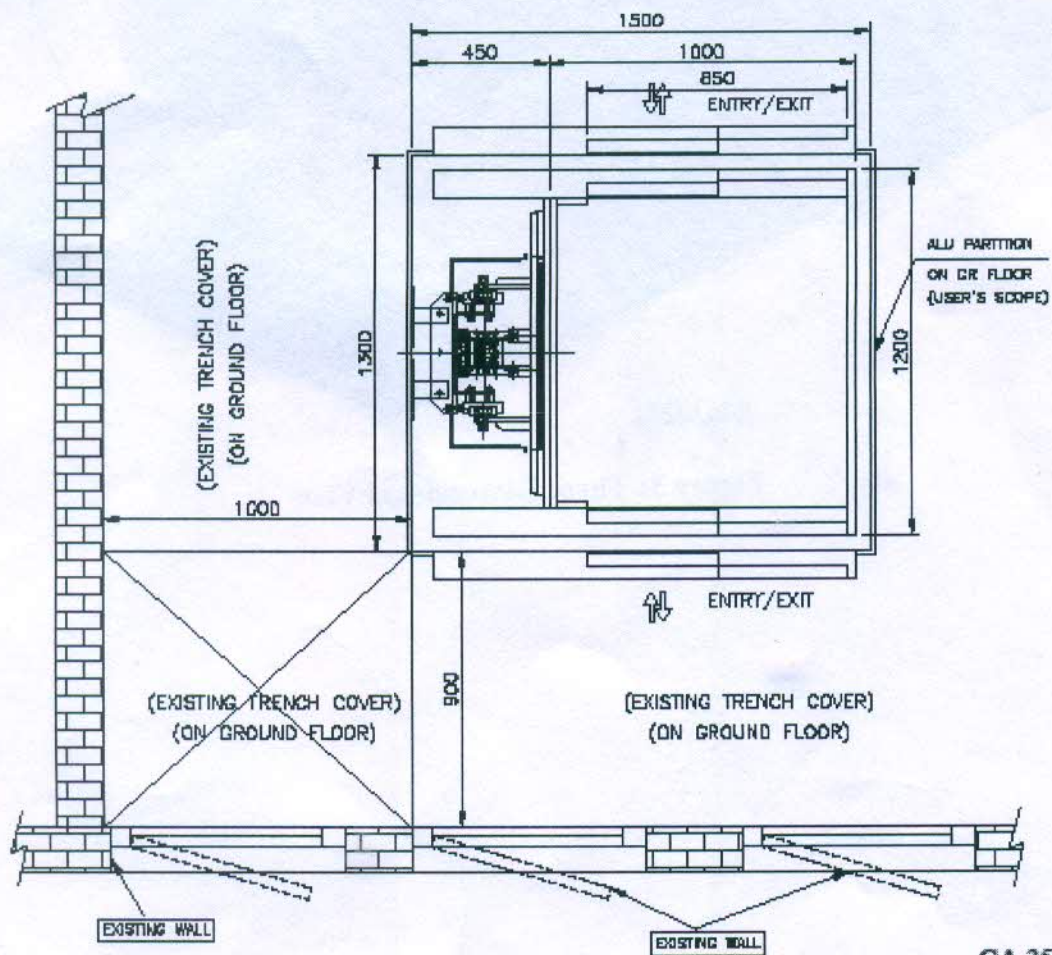


Figure 1: Elevation

PROPOSED CAPSULE-LIFT

SPECIFICATION :

MODEL	: G+2
CAPACITY	: 300 KGS.
NO. OF STOP	: 3 NOS.
PLATFORM	: 1000 MM. x 1300 MM.
MOUNTING	: BASE , ALL REAR SUPPORT, TOP SUPPORT
POWER SOURCE	: 3 PHASE A.C.
ENTRY-EXIT	: SIDE
LOWER HEIGHT	: F.F.L.
MAX. LIFTING HEIGHT	: 8100 mm FROM F.F.L.
OVERALL HEIGHT	: 11000 mm FROM F.F.L.



GA 3580-1

Figure 2: Plan

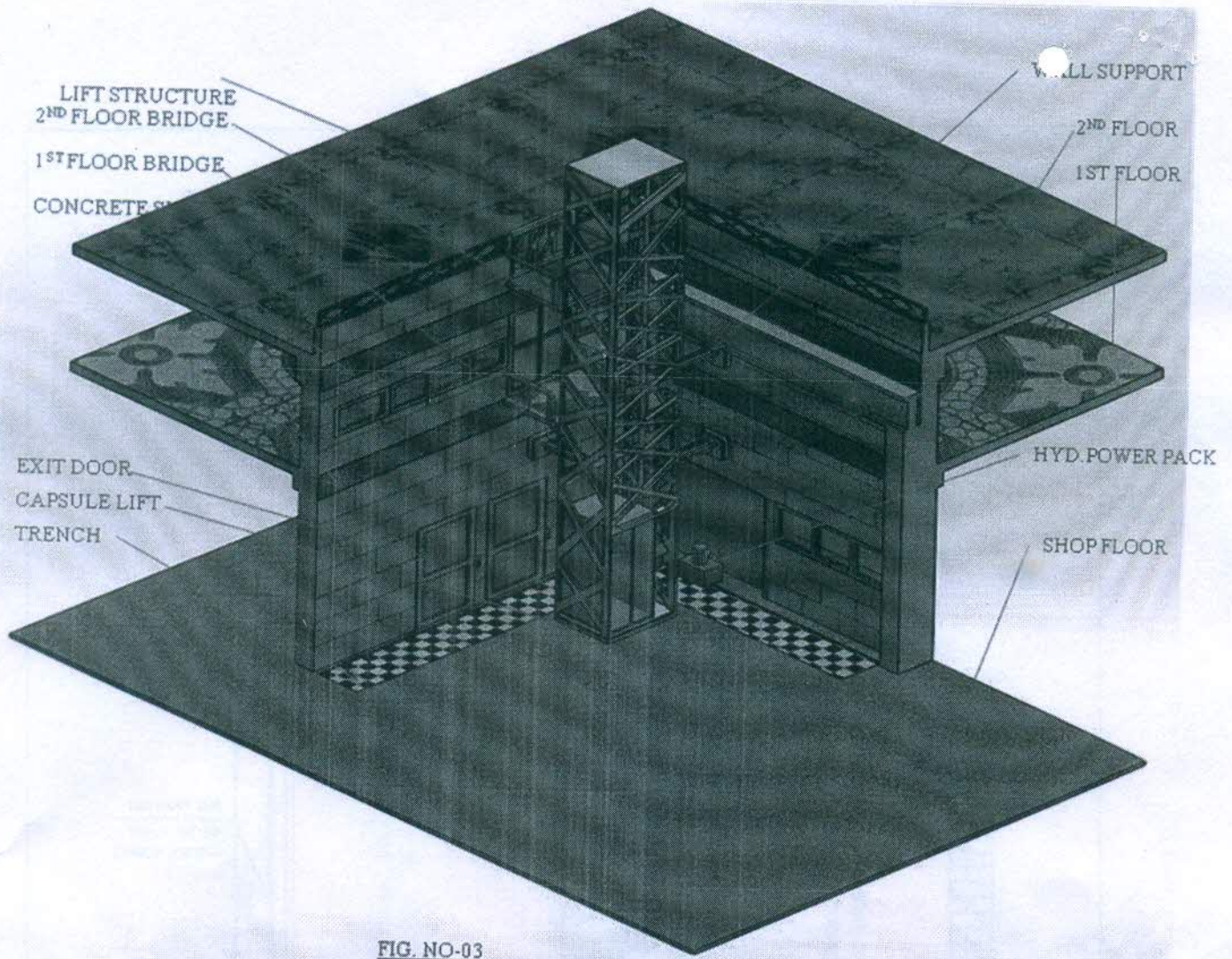


FIG. NO-03

Figure 3: Three Dimensional View