



Dr. Archana Sharma  
Head, PPSS, APPD  
arsharma@barc.gov.in



Government of India  
Bhabha Atomic Research Centre  
Accelerator and Pulse Power Division

Engg. Hall No.4, Trombay,  
Mumbai-400085  
Tele: (+9122)25590171

Ref.: BARC/APPD/VKS/2017/269

Date: 12/09/2017

Subject: Inviting quotations for fabrications of bin and panel for power supply.

You are requested to quote for the following items for bin and panel for power supply as per detailed given in annexure I.

S.no.	Item to be fabricated	Quantity
1.	MS frame with ivory power coating as per annexure I	1
2.	Front cover with ivory power coating and components mounted as per annexure I	1
3.	Back cover with ivory power coating and components mounted as per annexure I	1
4.	Right side cover with ivory power coating as per annexure I	1
5.	Back side cover with ivory power coating as per annexure I	1
6.	Bottom sheet with ivory power coating as per annexure I	1
7.	Bottom cover with ivory power coating as per annexure I	1
8.	L support with ivory power coating as per annexure I	1

1) For any clarifications the supplier can contact Sh. Vishnu Sharma, SO/E, APPD on any working day (Monday to Friday) on telephone Nos. 25592644 or email: vishnu@barc.gov.in.

2) Payment for the above work will be made after satisfactory completion of job and on production of bill & advanced stamped receipt along with the copy of registration. No advance payment will be made for this work since ours is a Government organization. Only 5.4% CST will be paid by BARC & no Octroi will be paid. Income-tax @2% & surcharge on Income-tax @15% will be deducted from the bill and a TDS (tax deducted at source) certificate will be issued as per Income-tax rules. Suppliers should submit their offers along with the following information.

(a) period of validity, terms & conditions of the offer, (b) Approximate period of completion of the task and (c) copy of the registration and income-tax clearance certificate.

Additional Information:

Your sealed quotation (in your letter head) including all details, like taxes to be paid, transport charges etc., duly indicating our reference number mentioned above, due date & time of opening of quotations on the envelop, may be sent to "**Head, PPSS, APPD, Engg. Hall No.4, Trombay, MUMBAI-400085**", on or before, **22<sup>nd</sup> September 2016**. It is requested that the tender must be sent by Speed-post. The quotations received after the due date & by FAX/email will not be considered.

Yours faithfully,

(Dr. Archana Sharma)  
Head, PPSS, APPD, BARC

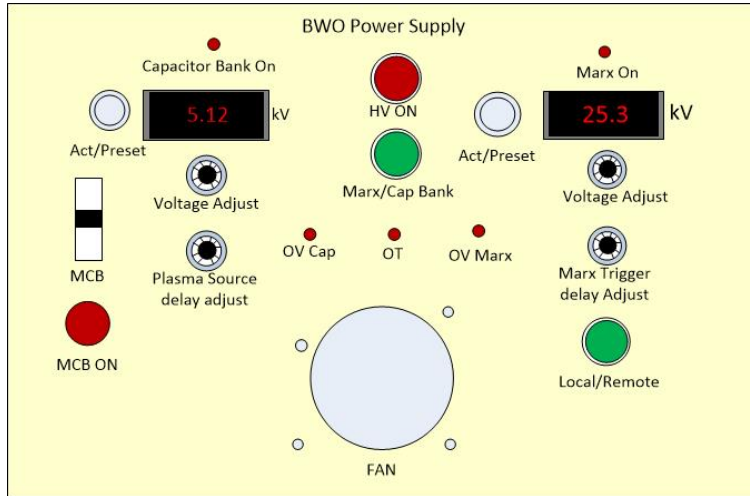
Copy to: A.P.O., GSS Section, Central Complex, BARC.

## Annexure I

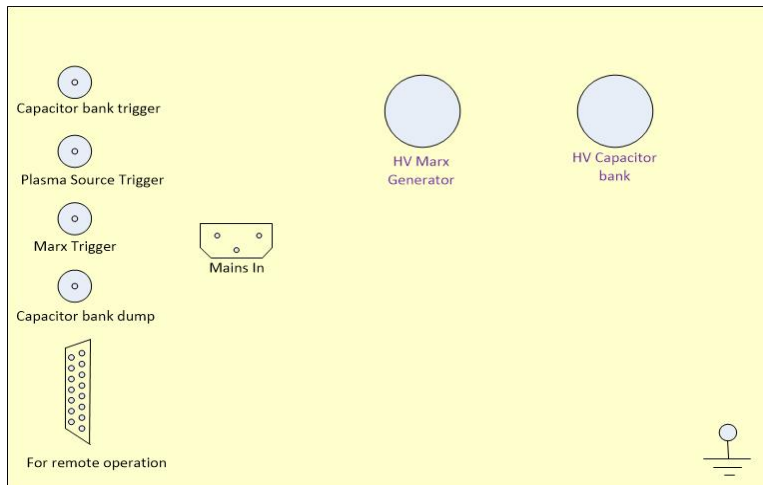
### Bill of materials:

S. no.	Components	Quantity
1.	12V green color push to on/off switch	3
2.	12V red color push to on/off switch	1
3.	12V push button switch	2
4.	LCD display supply: 15V/24V Display (00.0 to 50.0 for 0 to 5V)	1
5.	LCD display supply: 15V/24V Display (00.0 to 10.0 for 0 to 5V)	1
6.	Single phase 10A MCB	1
7.	10A single phase EMI filter with socket	1
8.	BNC port	4
9.	Female 15 pin D- connector	1
10.	5V 5mm LED	5
11.	5mm LED panel holder	5
12.	230V single phase LED	1
13.	5K POT (10 rotation)	4
14.	POT turns counting dials (bourns H-516)	4
15.	Fan-SKF 3-230	1

Front and back panels have to be engraved for display the features as following figures.

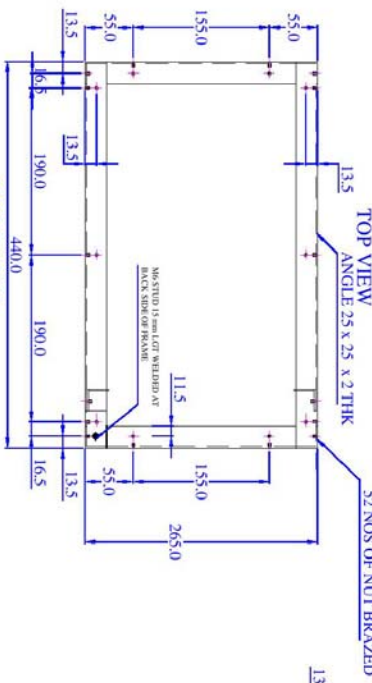
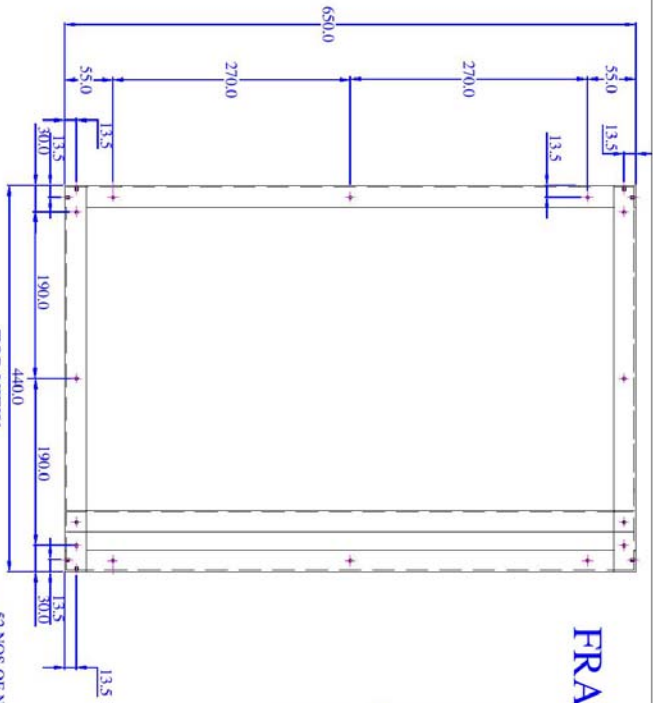
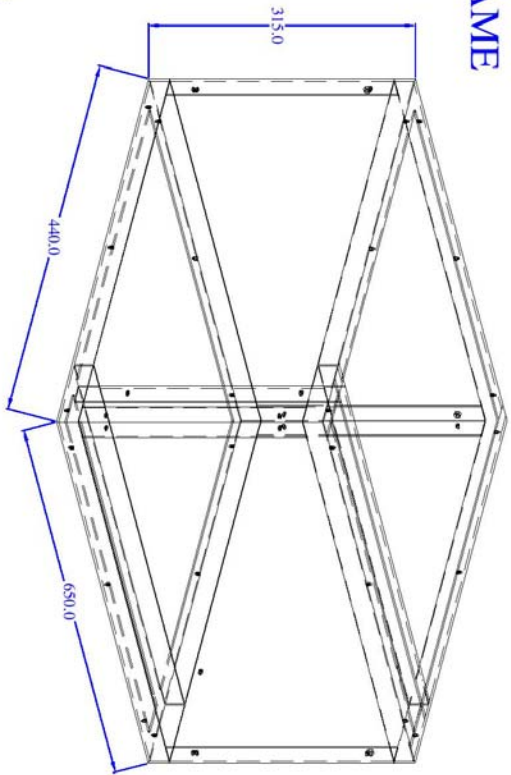


Front Panel

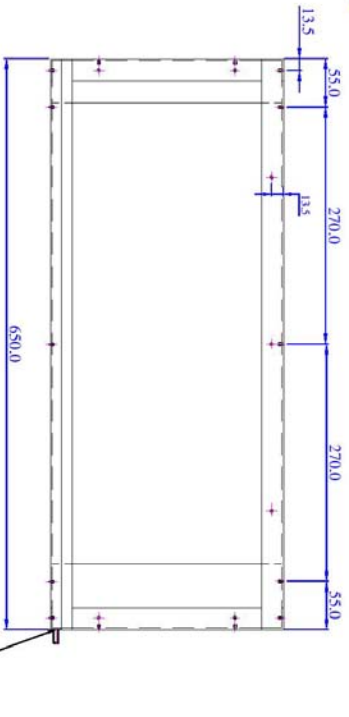


Back Panel

# FRAME

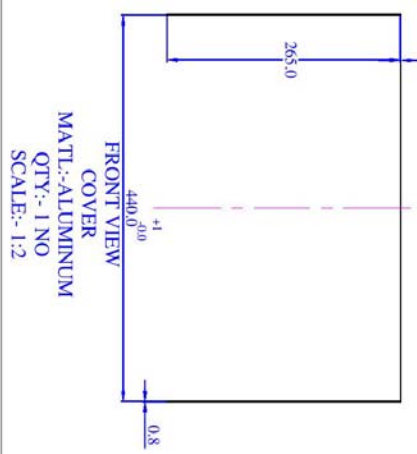
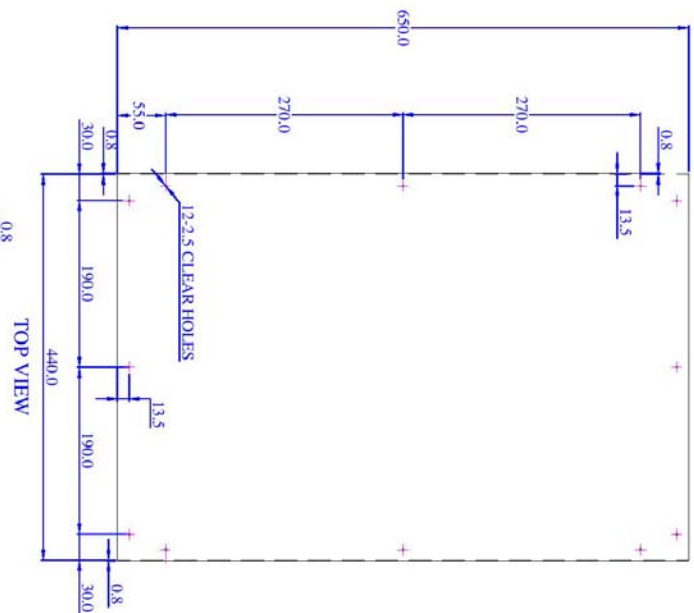


FRONT VIEW  
 FRAME  
 MATL:-ALUMINIUM  
 QTY:- 1 NO  
 SCALE:- 1:2

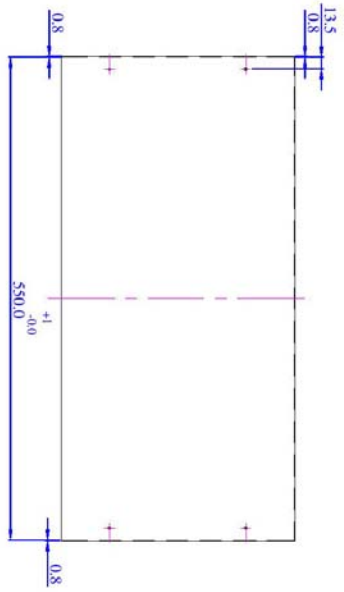


M6 STUD 15 mm LGT WELDED AT  
 BACK SIDE OF FRAME

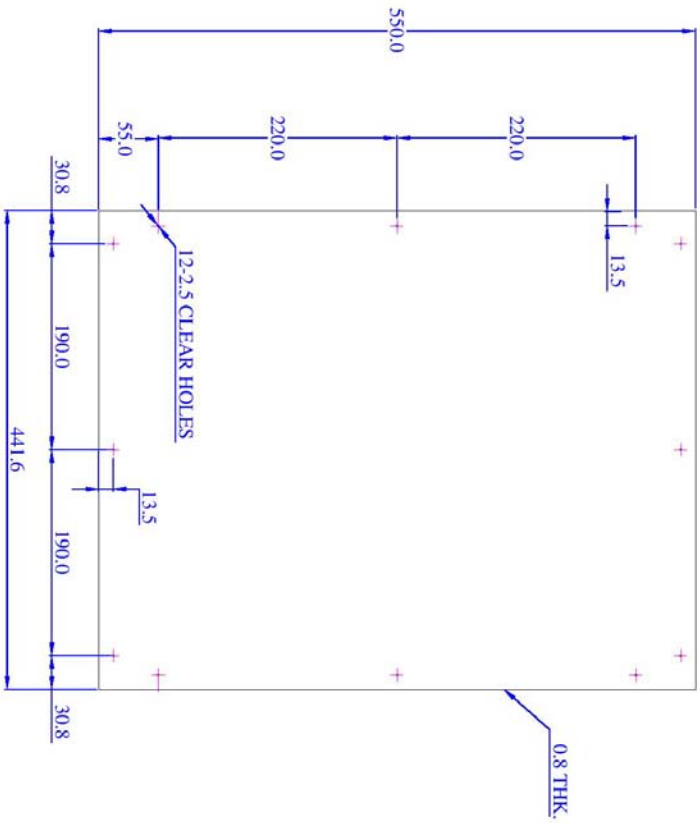
# COVER



COVER  
MATL:-ALUMINUM  
QTY:- 1 NO  
SCALE:- 1:2

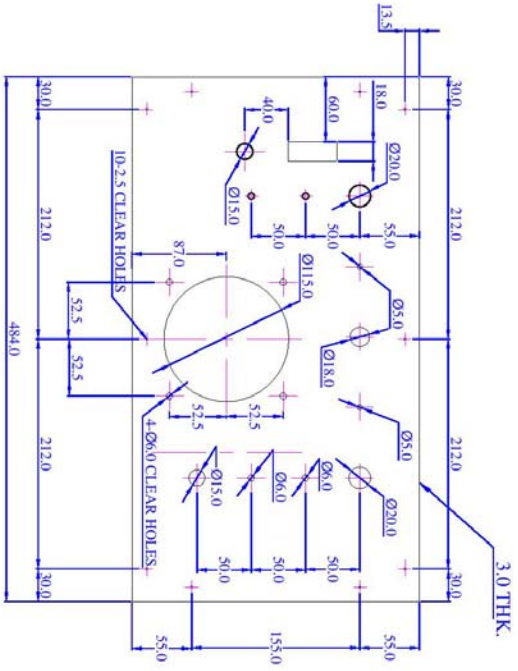


# BOTTOM COVER



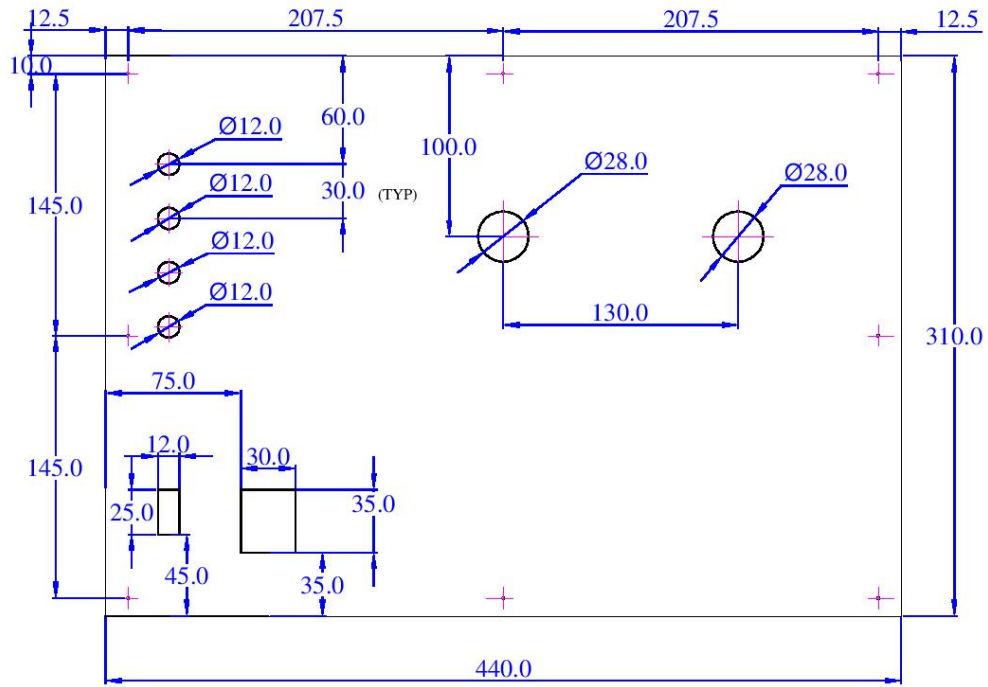
FRONT VIEW  
BOTTOM COVER  
MATL:-ALUMINIUM  
QTY:- 1 NO  
SCALE:- 1:2

# FRONT COVER



FRONT VIEW  
FRONT COVER  
MATL:-ALUMINIUM  
QTY:- 1 NOS  
SCALE:- 1:2

# BACK COVER



FRONT VIEW  
BACK COVER  
MATL:-ALUMINUM  
QTY:- 1 NOS  
SCALE:- 1:2