



Government of India  
Bhabha Atomic Research Centre  
Technical Physics Division

Ref : TPD / KGB / 2017 / 77802

Mod Labs., Trombay.  
Dated: 09 – 05 – 2017.

**Sub : Minor Fabrication - Invitation of Quotation.**

**Fabrication and Supply of 10-Pin Atmospheric Side Connectors for Vacuum Gauge as per drawings and specifications.**

**Quantity : 50 nos.**

Dear Sirs,

1. Quotations are invited for the minor fabrication job as per the enclosed specifications and drawings.
2. Taxes and excise duties shall be quoted separately.
3. **Please mention PAN and TAN Reg. Nos., SSI certificate if available and affix company seal.**
4. The quotations must be sent by **Normal Post or Speed Post**, to The Head, Technical Physics Division, so as to reach by **3:00 p.m, 18 – 05 – 2017** and must be sent in a sealed **envelope superscribed with the above reference number and due date** given above. The quotations will be opened on **19 – 05 – 2017**
5. The address on the envelope should read :  
The Head,  
Technical Physics Division, Mod Labs.,  
Bhabha Atomic Research Centre, Trombay,  
Mumbai – 400 085. Attn : Dr. K. G. Bhushan
6. The fabrication work shall be subject to inspection by our engineers at bidder's works. Necessary inspection facilities should be provided to our engineers during fabrication at bidder's premises.
7. The bidder shall deliver the finished components after approval by our engineer within **60 days** from the date the firm purchase order is issued to the bidder. The finished components and the scrap from the free issue material shall be delivered by the bidder at **North Gate, B. A. R. C, Trombay, Mumbai - 85.**
8. Head, T P D, B A R C., reserves the right to accept /reject any or all quotations without assigning any reason.

**Encl : Drawings / Specifications Sheets.**

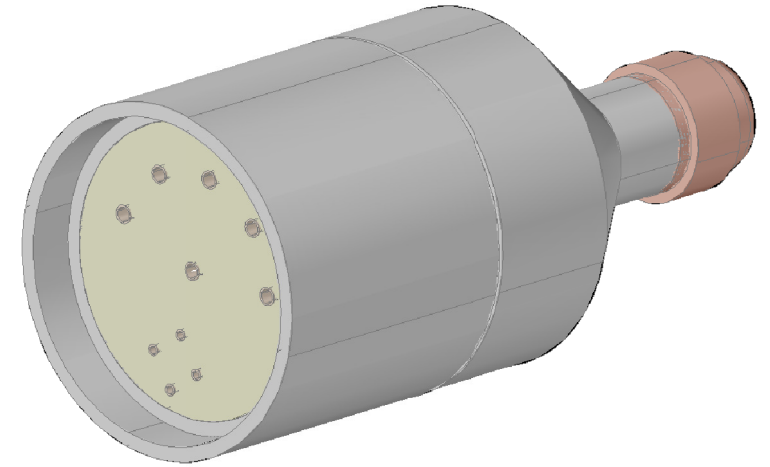
**Sd/-**  
**Head,**  
**Technical Physics Division**

10 - PIN CONNECTOR

TPD/KGB/2017/77802

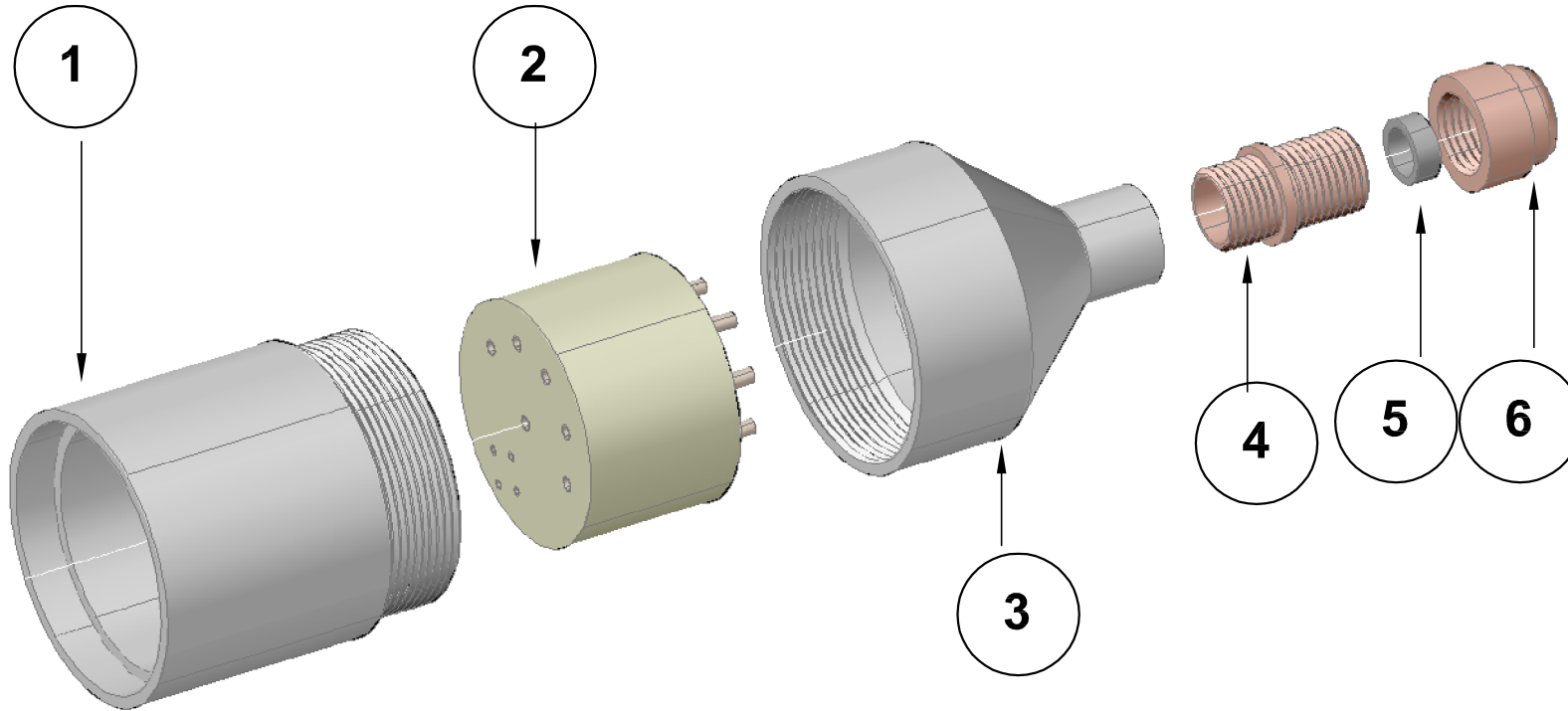
MATERIAL : ALUMINIUM & PEEK  
QUANTITY : 50 NOS.

NOTE : TO BE MACHINED FROM SOLID.



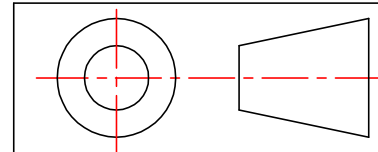
ASSEMBLY DRAWING

ASSEMBLED CONNECTOR



IF IN DOUBT ASK.

ALL DIMENSIONS ARE IN mm  
UNLESS STATED OTHERWISE GEN. TOLERANCE  
FOR ALL MACHINED PARTS SHOULD BE "MEDIUM"  
TOLERANCE AS PER IS:2102-1993.



GOVERNMENT OF INDIA  
BHABHA ATOMIC RESEARCH CENTRE  
TECHNICAL PHYSICS DIVISION.

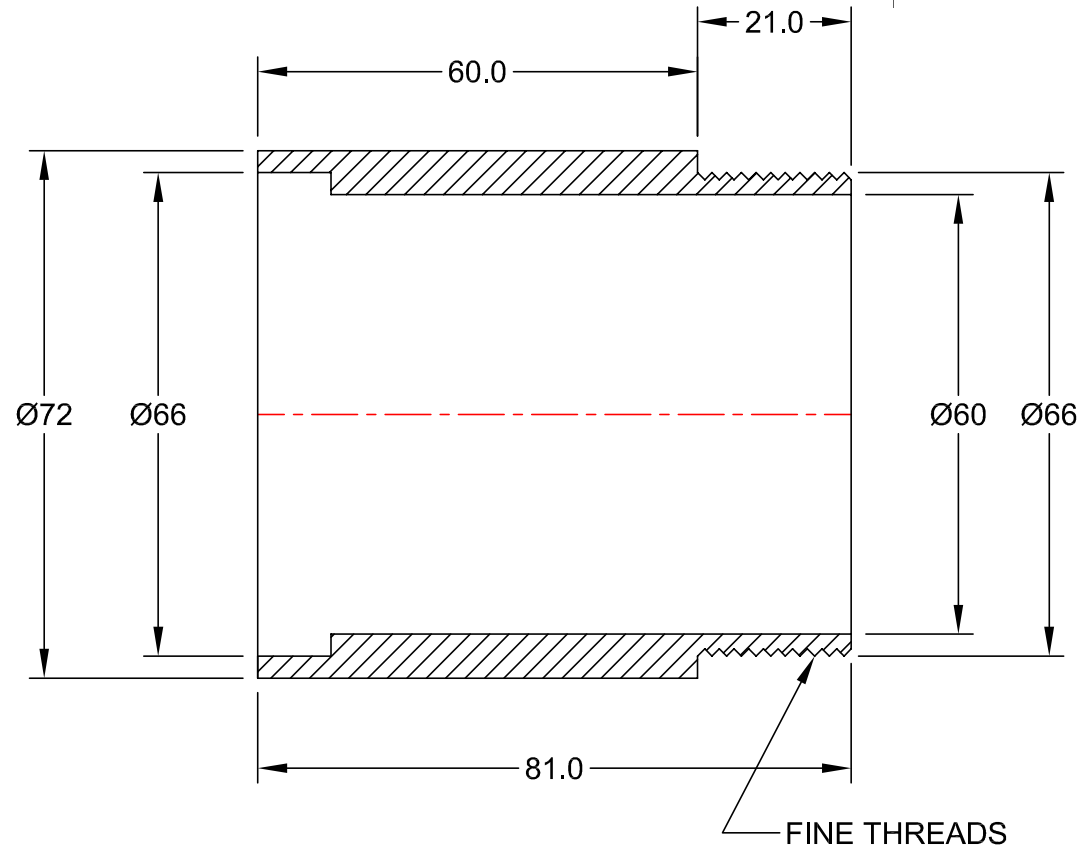
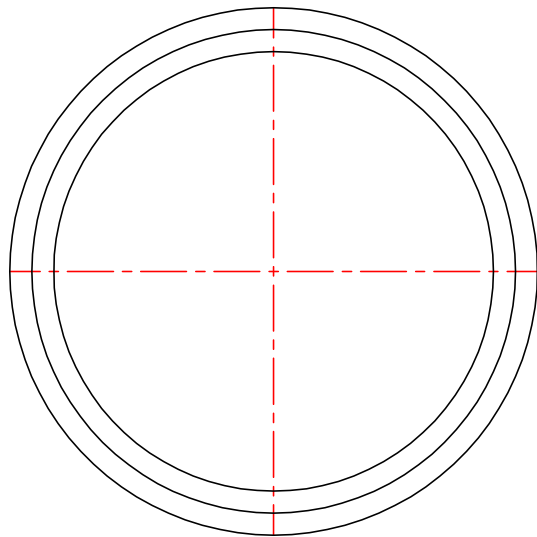
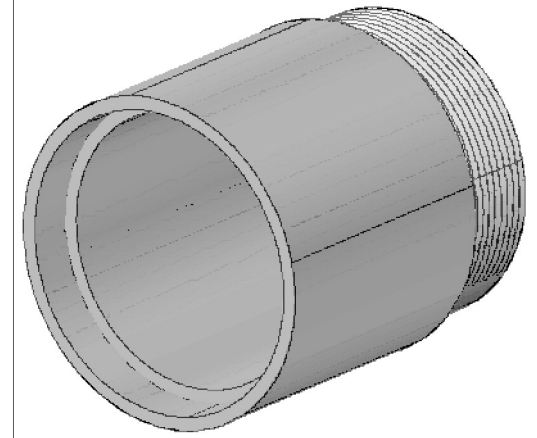
PART - 1

TPD/KGB/2017/77802

ALUMINIUM OUTER COVER

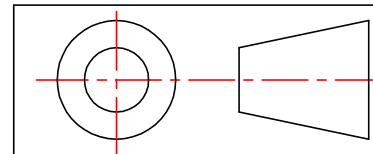
MATERIAL : ALUMINIUM  
QUANTITY : 50 NOS.

NOTE : TO BE MACHINED FROM SOLID.



IF IN DOUBT ASK.

ALL DIMENSIONS ARE IN mm  
UNLESS STATED OTHERWISE GEN. TOLERANCE  
FOR ALL MACHINED PARTS SHOULD BE "MEDIUM"  
TOLERANCE AS PER IS:2102-1993.



GOVERNMENT OF INDIA  
BHABHA ATOMIC RESEARCH CENTRE  
TECHNICAL PHYSICS DIVISION.

PART - 2

TPD/KGB/2017/77802

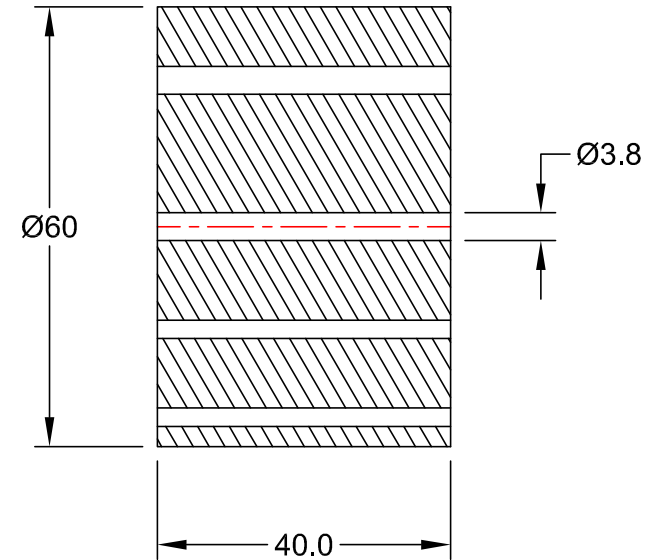
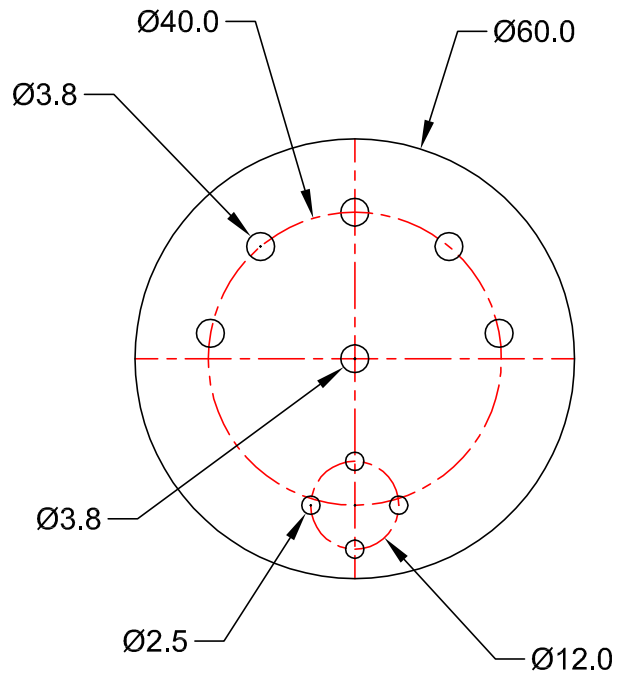
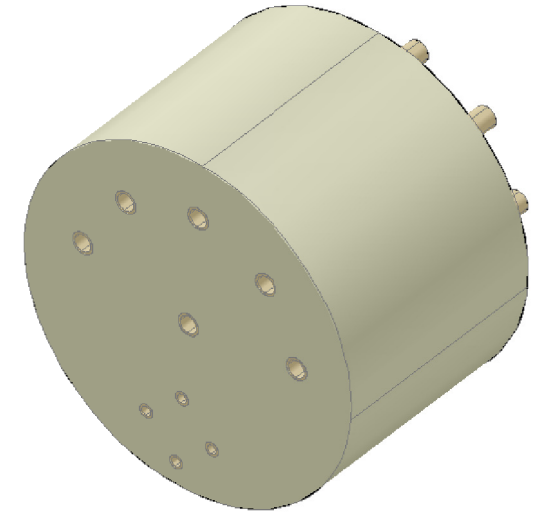
HIGH INSULATOR

MATERIAL : PEEK OR MACHINABLE CERAMIC

QUANTITY : 50 NOS.

NOTE : 1) TO BE MACHINED FROM SOLID.

2) THIS PART TO BE SHRINK FITTED INSIDE PART - 1 HEATING PART-1 AND PUSHING PART - 2, THEN COOLING IN LIQUID NITROGEN

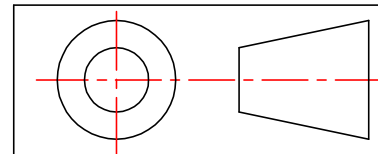


**NOTE - 2 : FITTING OF CONDUCTORS**

- 1) CONDUCTOR MATERIAL : BERYLLIUM COPPER
- 2) CONDUCTOR ID / OD : FOR 6 - PINS : 3.5 / 3.8, FOR 4 - PINS : 2.2 / 2.5
- 3) SOLDER CUP (6MM LONG) TO BE PROVIDED AT ONE END OF PINS

IF IN DOUBT ASK.

ALL DIMENSIONS ARE IN mm  
UNLESS STATED OTHERWISE GEN. TOLERANCE  
FOR ALL MACHINED PARTS SHOULD BE "MEDIUM"  
TOLERANCE AS PER IS:2102-1993.



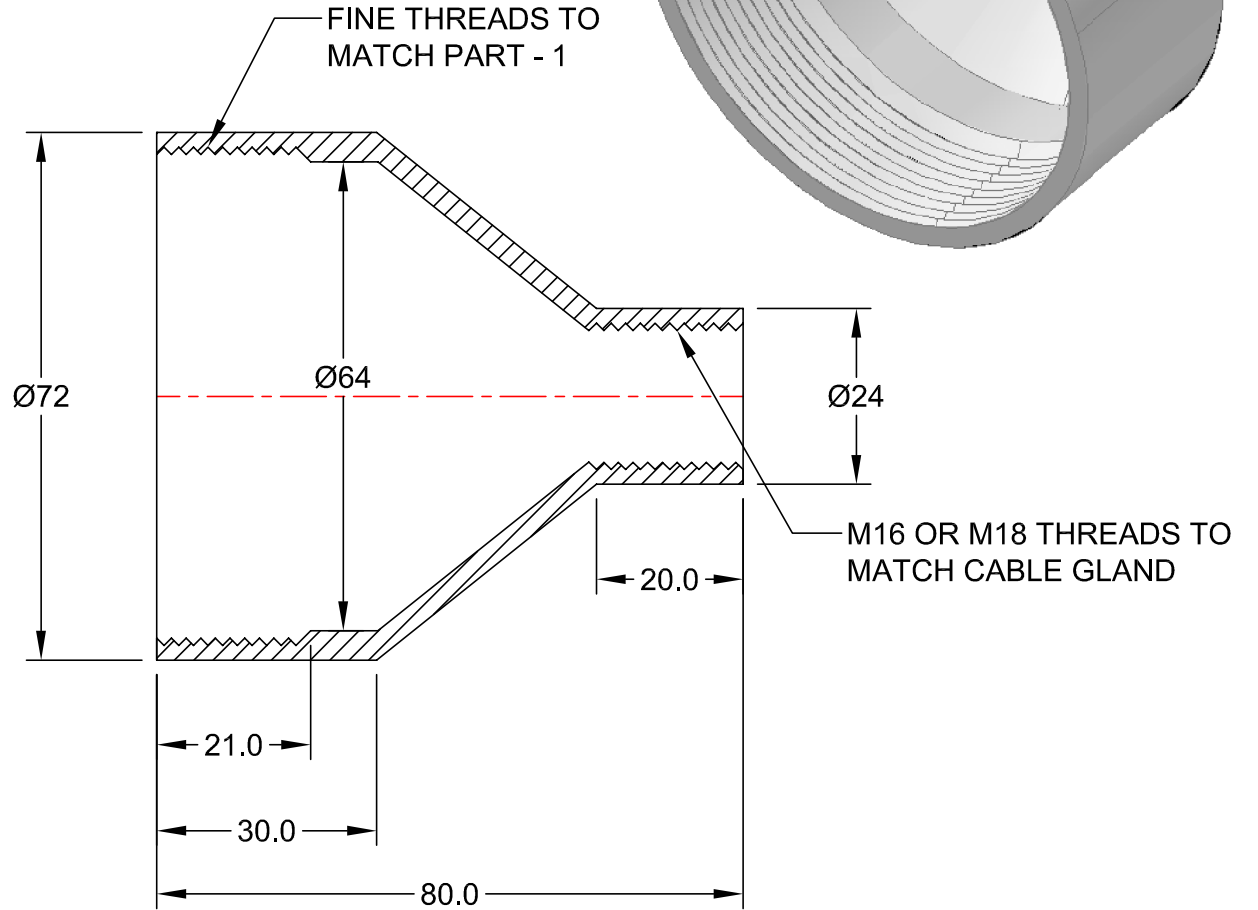
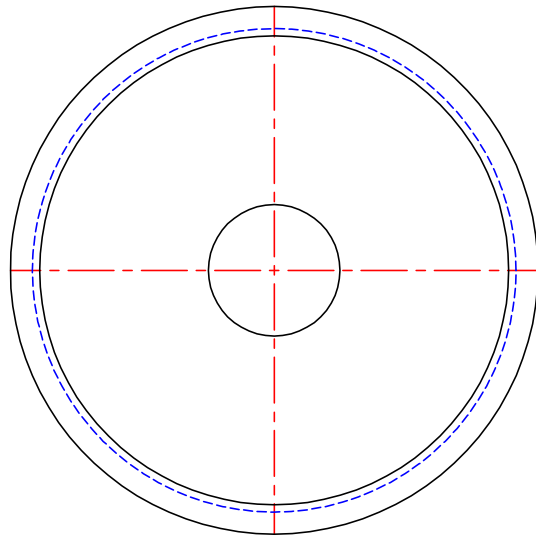
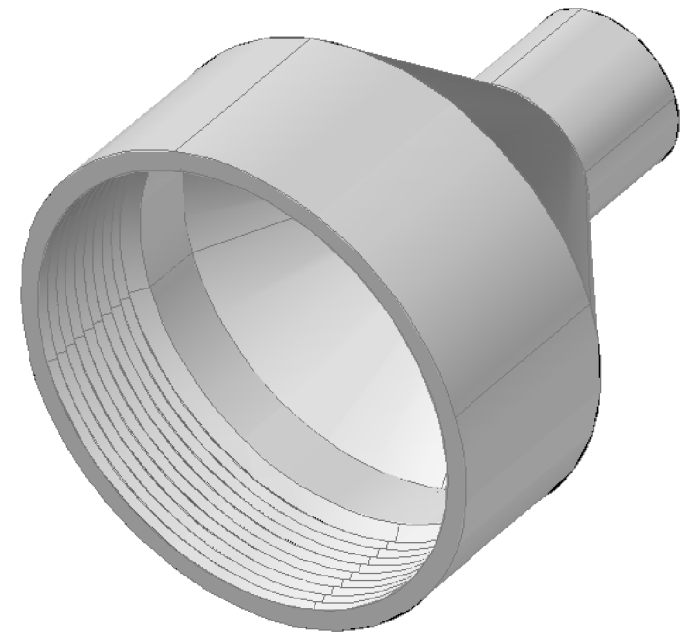
GOVERNMENT OF INDIA  
BHABHA ATOMIC RESEARCH CENTRE  
TECHNICAL PHYSICS DIVISION.

PART - 3

BACK COVER WITH CABLE GLAND

MATERIAL : ALUMINIUM  
 QUANTITY : 50 NOS.

NOTE : 1) TO BE MACHINED FROM SOLID.  
 2) THREADS TO MATCH WITH PART - 1.



**NOTE :**

- 1) PART NOS. 4,5,6 ARE PARTS OF CABLE GLAND
- 2) STANDARD SIZE CABLE GLAND M16 / M18 SHOULD BE FITTED TO THE CONICAL END
- 3) MATERIAL OF CABLE GLAND : HDPE
- 4) QUANTITY : 50 NOS.

IF IN DOUBT ASK.

ALL DIMENSIONS ARE IN mm  
 UNLESS STATED OTHERWISE GEN. TOLERANCE  
 FOR ALL MACHINED PARTS SHOULD BE "MEDIUM"  
 TOLERANCE AS PER IS:2102-1993.

