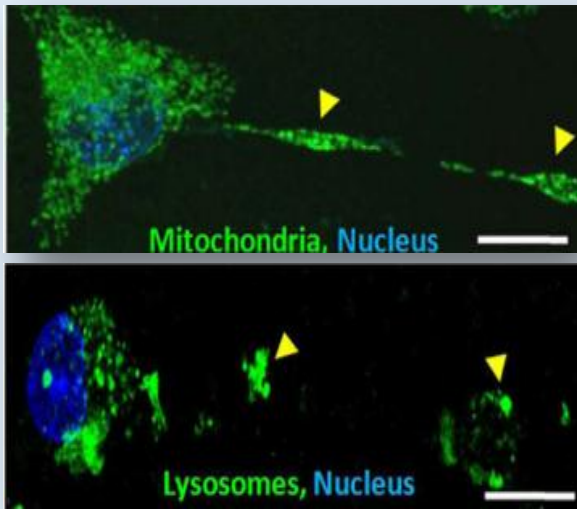


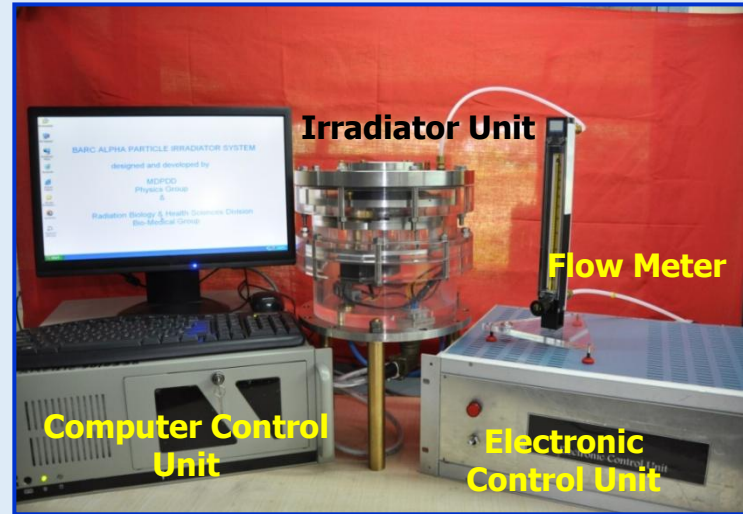
Low and High LET Radiation-induced Bystander Effect with Relevance to Cancer Radiotherapy

Tunnelling nano-tubes and microplasts in cancer cells

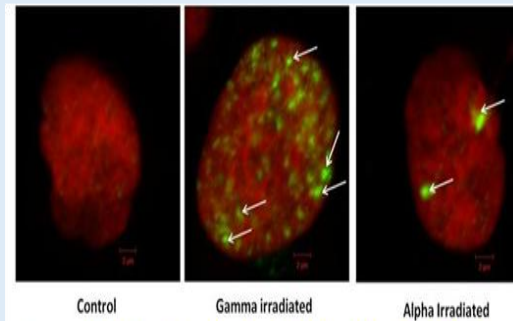
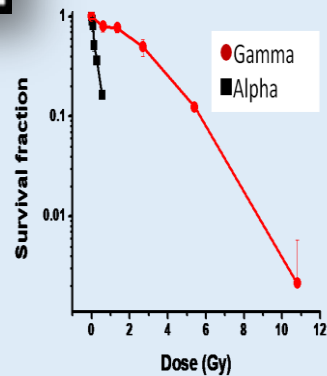


India's First Indigenous Alpha Irradiator

(in collaboration with PG, RC&IG and HS&EG, BARC)
Technology transferred



Tumor Cell Killing



GammaH2AX foci (marker for DNA double strand break; green color) in nuclei of human cells

Bystander Effect for Radiotherapy of Metastatic Cancer

