

Portable Biochip Reader

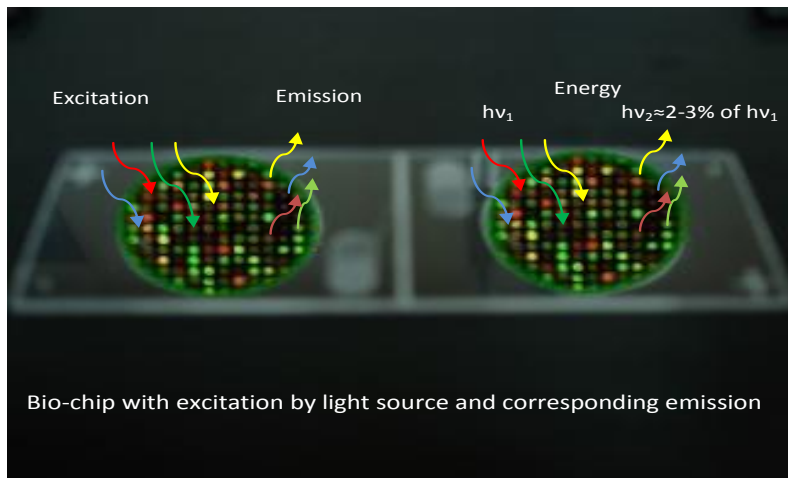
Biochip reader is an indigenous portable device used to detect a very low light fluorescence signal of tagged patient sample from Biochip for early diagnosis of cancer.



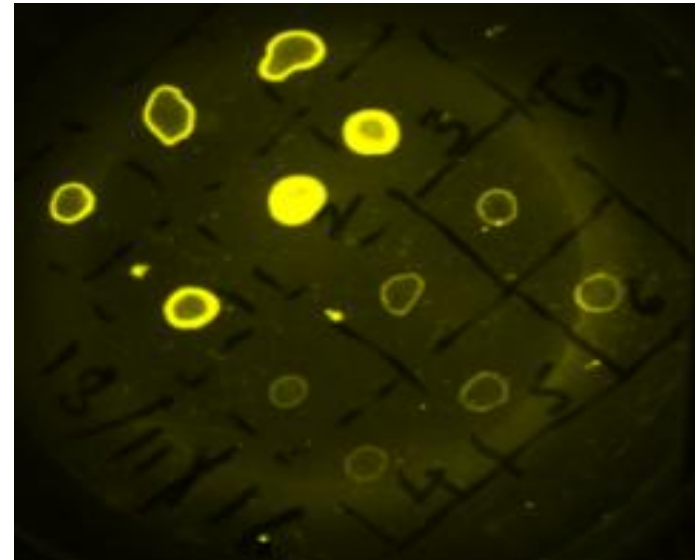
Portable Biochip Reader

Features:

- Monochromatic light source and high resolution image acquisition module.
- Capable of generating a high-resolution images of $6\ \mu\text{m}$.
- Image processing algorithms for discriminating a low fluorescent signal from background noise



Simulated results



Actual results with patient sample