

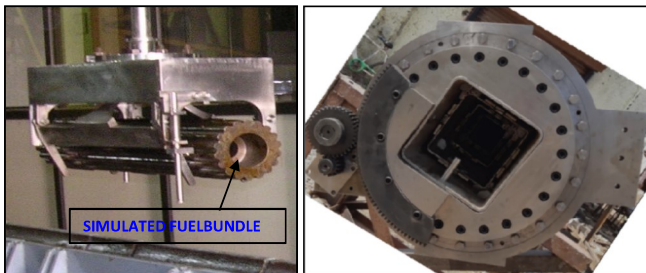
REMOTE OPERATED FUEL BUNDLE AND TRAY HANDLING SYSTEM FOR 540 MWe PHWRs

OBJECTIVE:

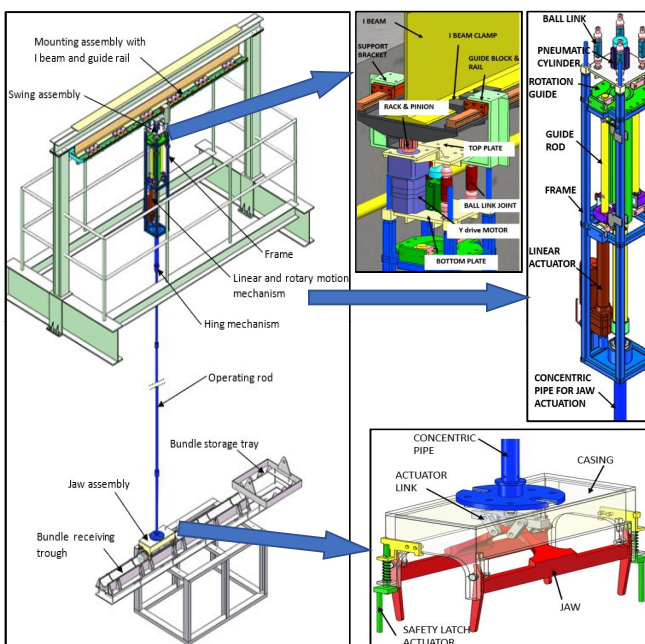
- REMOTE HANDLING OF FUEL BUNDLE & TRAY IN SFSB.
- REDUCTION IN MAN-REM CONSUMPTION.

DESIGN FEATURE:

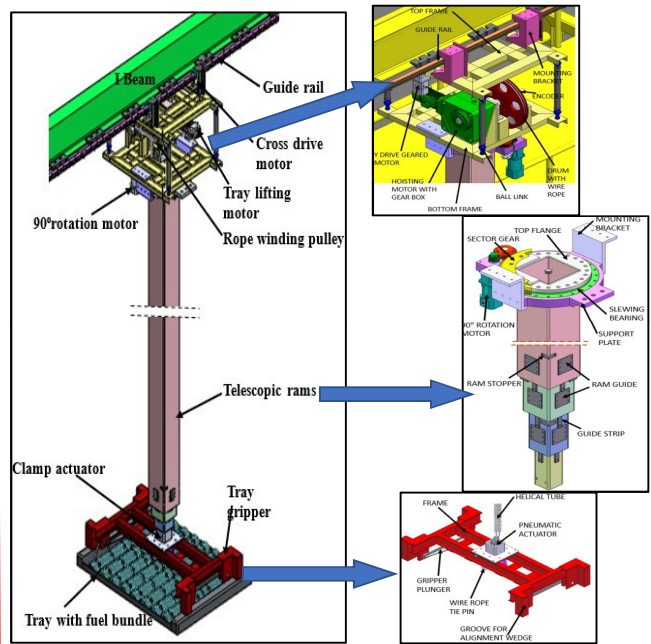
- ABILITY TO APPROACH ALL LOCATIONS OF THE FUEL BUNDLE ON RECEIVING TROUGH
- COMPATIBILITY WITH EXISTING CONFIGURATION OF GANTRY AND BUNDLE TROUGH/ TRAY
- MAINTAIN THE REQUIRED WATER SHIELDING DURING HANDLING
- SAFE HANDLING OF FUEL BUNDLE AND TRAY



REMOTE OPERATED FUEL BUNDLE AND TRAY HANDLING SYSTEM FOR 540 MWe PHWRs



FUEL BUNDLE HANDLING SYSTEM



TRAY HANDLING SYSTEM