

2. Portable Biochip Reader

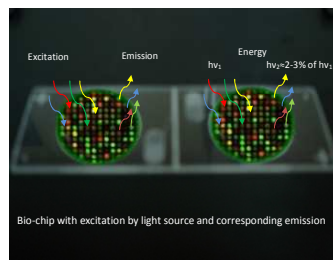
It is a device used to detect a very low light hybridized fluorescence signal of tagged patient test sample from bio-chips (microarrays) for early diagnosis of diseases. Bio-chips contain several immobilized reference antibodies/proteins/DNA microarrays that provides qualitative or quantitative information about several proteins/DNA for more sensitive and specific diagnosis of diseases like cancer, TB, endocrine disorders etc. The system allows the use of many different fluorescent dyes and UCP (Up Converting Phosphor) technologies. It has no moving mechanical parts, it is a solid state design and requires minimum maintenance with a simple user interface.

System has been delivered at RMC, Parel and under clinical use.

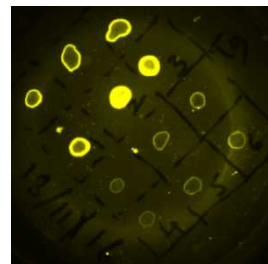


Biochip Reader

Fluorescent FITC labelled antibodies images of bio-chip



Simulated results



Actual results with patient sample