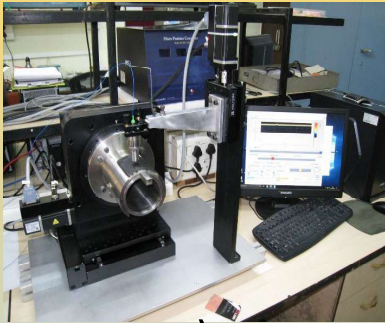
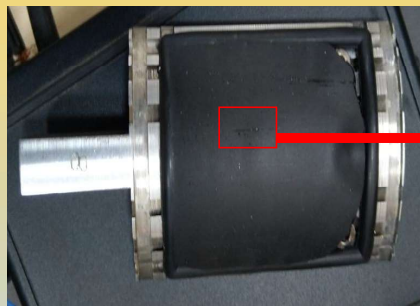


OCT BASED PT REPLICA IMAGING SYSTEM



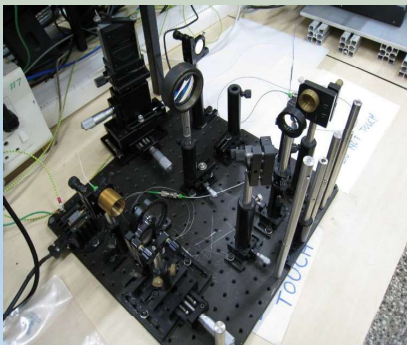
a)



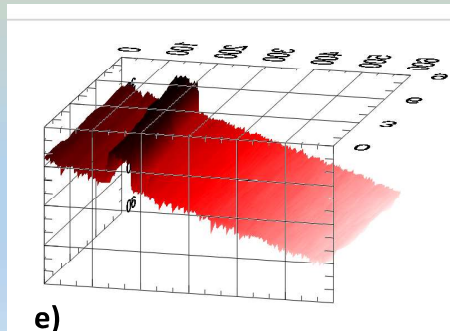
c)



d)



b)



e)

- a) PT-REPLICA scanning stage
- b) Michelson interferometer part of the imaging system. It is connected to scanning stage through a 1m fibre
- c) PT-REPLICA mounted on a metal holder
- d) Enlarged image of a defect on PT REPLICA
- e) 3d profile showing the defect of height 142 ± 10 microns.

Current status: defect with ≤ 20 microns sample to be given by RED/NPCIL for final validation